

SEE IS2100 FOR MACHINING AND INSTALLATION INSTRUCTIONS. THIS ASSEMBLY SIMILAR TO 21011004 ON IS2100. LUBRICATE ALL SEALS WITH CLEAN HYDRAULIC OIL PRIOR TO ASSEMBLY.

DO NOT USE SILICONE BASED LUBRICANTS.



BODY, NOT A REPLACEMENT PART

ASSEMBLY INSTALLATION TIGHTEN TO 35 FT-LBS TORQUE.
*CYLINDERS MAY NEED TO BE RE-TORQUED AFTER A BREAK-IN PERIOD OF 3 WEEKS OR 2,500 CYCLES.

ASSEMBLE WITH LIP SIDE OF SEAL FACING BOTTOM OF POSTON.

N/A	N/A	6V210110	SEAL KIT, FKM		NOTED
N/A	N/A	60210110	SEAL KIT, STANDARD		NOTED
7	1	39V11020	WIPER, PRESS-IN, (5/8)	X	X
6	1	39T55006	GASKET, (1.004 x .107 x .080)	X	X
5	1	82110805	PISTON, CYL, MM, 3900, .50 STK, THD		
4	1	39055024	GASKET, COPPER	X	X
3	1	39010014	SEAL, BEVEL, 13/16 x 3/32 x 1	X	39012001
2	1	23355026	SPRING, COMPRESSION		
1	1	23050008	WASHER	X	X
No.	QTY	PART No.	DESCRIPTION	Std. Seal kit	FKM Seal Kit

PARTS LIST



VEKTEK, INC.
1334 E. SIXTH AVE. P.O. BOX 625
EMPORIA, KS. 66801 U.S.A.

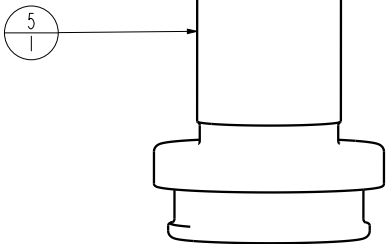
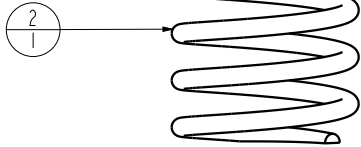
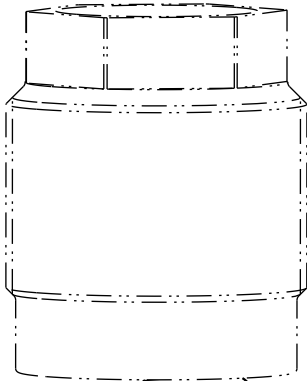
ASSEMBLIES AFFECTED
21-010-05

PARTS LIST, ASSY, CYL, CM, 3900, .50 STRK, SA

SIZE A
PL21100

REV B

FORM FEG035_PL_ASIZE, REV. B



B	4643	RELEASE	RLK	3/14/22
REV	IN ACCORDANCE WITH ECN	EFFECTIVE DATE	REVISED BY	DATE
DRW BY:	JDW	DRAWING STATUS: Released		
DATE:	02/19/21	PRODUCTION APPROVED FOR RELEASED STATUS ONLY		

SHEET 1 OF 1